

Newsletter of the Tasmanian Quilting Guild Inc.

PO Box 181, North Hobart,

Tasmania 7002

Volume 38, Issue 1

February 2021



ISLAND THREADS



**Faye Harding, winner of the Vice President's Challenge 2020 , with her quilt titled
*From the Devastation***

On this issue...

Exhibition at Gone Rustic. p2

From our President p3

Calendar of Events. p4

Poatina Retreat p5

Island Quilts. p5

Christmas Friendship Day p6

Workshop with Barbara Mellor. . p8

Vice President's Messagep8

Call for entries p9

MQG Workshop. p9

Around the State p10

Call for entries. p11

DPQ Friendship Day p11

Tassie Shops & Businesses. . . . p12

Traditional Quilting in England &

Wales p13

Appraisal Report. p13

Newsletter advertising p14

Committee Contact Info p15

Aims of the TQG p15

A message from Bernina p16

Exhibitions at



1. International Prayer Flag Project

All the way from California to Tasmania! Symbols of hope and love made by contributors from around the world. The prayer flags will be displayed on rotation (52 at a time) as there are many more than can fit all at once in the gallery space! Coordinated by Linda G. Illuminardi, California



2. 'Emerge' exhibition - Stitching and Beyond Inc

This exciting exhibition features works by members of Stitching and Beyond Inc, a group which celebrates the work of textile artists exploring innovative and diverse approaches to fibre and textile arts. Thirteen A3 sized works showcase a wonderful variety of skills and interpretations. Co-ordinated by Jenny Blake, Hobart.



Both exhibitions are on now at:

Gone Rustic Studio + Gallery, 37 Main Street, St Marys, Tasmania

Open: 11 am - 3 pm (Mon - Sat), or by appointment)

Entry: free

gonerustic.com

The President's Kitchen Table Chaos



Happy New Year!

The New Year celebrations seem like such a long time ago. Since then, my little family have had beach holidays, bush picnics, family catch ups, shopping trips, movie days, pool days, sleep overs and time with friends. We have even managed the odd quiet day at home to rest... and catch up on washing ;) If you haven't been quite that active I do hope you have managed to get in a bit of family time and a lot of quilting. I

can't wait to see everyone's sewing room efforts in the upcoming months, whether that be for show and tell at a meeting or entered in Island Quilts later in the year. So it is with a new energy that we find ourselves ready (almost) to start into a new school and work year.

The biggest THANK YOU to all committee, members and non-members assisting with organising our Christmas meeting and friendship day in December. The team headed up by Tina, our Southern Area Rep, did an amazing job at planning and staging our event. And special thanks to members of the CWA for their efforts in the kitchen. It was so lovely to see so many new faces at our meeting and we look forward to welcoming a few new members soon. Although very different to our regular Christmas celebrations, different venue and changed catering style, it was a fitting end to a year where everything changed; everywhere. I'm so proud of how our little state has worked together to keep ourselves as safe as possible in 2020.

Well done to the winner of our 2020 Vice Presidents Challenge, Faye Harding. And to our Secretary, Gaye Marshall for her win in the Christmas Table Runner Challenge.

Our next focus is our March meeting. We've brought back our demo/discussion table that has given us a great space to share thoughts and discuss options on a range of patchwork and quilting topics. It also gives us the opportunity to get out of our seats and chat to other members about our shared passion. This meeting the point of concentration will be on binding in all its many forms, traditional, bias and unusual shapes, facing on art quilts, beaded etc. And of course we would love your input, if you have quilts to show with unusual binding please bring them along for show and tell.



So here's to a New Year with many exciting new projects and shared inspiration.

Take care and happy quilting

Yvette Gilligan

Calendar of Events

Date	Event	Location
February		
27	Devon Patchworkers and Quilters Friendship Day	Devonport Soccer Club
March		
20	General Meeting	Punchbowl Christian Centre, Launceston
April		
17	COM meeting	Held online via Zoom
17	Appraisal Day	Punchbowl Christian Centre, Launceston
28	Newsletter submission deadline	Submissions to michelle.tqgeditor@mail.com
May		
12-16	Retreat	Poatina Chalet
June		
19	General Meeting	Punchbowl Christian Centre, Launceston
July		
17	COM meeting	Held online via Zoom
28	Newsletter submission deadline	Submissions to michelle.tqgeditor@mail.com
September		
18	AGM and General Meeting	Punchbowl Christian Centre, Launceston
October		
15-17	Island Quilts in conjunction with Craft Alive	The Goods Shed, Macquarie Point, Evans St, Hobart
16	COM meeting	TBA (Via Zoom or onsite at Craft Alive)
16	Appraisal Day	Punchbowl Christian Centre, Launceston
27	Newsletter submission deadline	Submissions to michelle.tqgeditor@mail.com
December		
4	Christmas General Meeting	Punchbowl Christian Centre, Launceston

If you have an interesting article or if your group has an event coming up and you would like to have it included in the newsletter please contact the editor: michelle.tqgeditor@gmail.com

Please read submission requirements on page 14.

**Only a few places left!
Don't miss out!**

Poatina 2021

12th May to 16th May 2021

There is a variety of accommodation choices, costs are on the website along with application form. <https://tasquiltguild.com.au/about/retreats/>

To secure your place, please complete the form and pay your deposit. Full payment to be paid by the 11th April 2021, a reminder will be sent.

Any enquiries to Lorraine Hyland 0428422305 or email lorraine.hyland@bigpond.com



Island Quilts

Going to press we still don't have a date for our 2021 event. We had a date but due to a clash with the Expertise Event in Brisbane, which they announced late last year, Craft Alive have had to reschedule and Bret is working hard to get things tied down. Thanks to everyone who handed in their rosettes at the Xmas bash. Homework is now officially due so could you please bring or send along any outstanding finished items to our March meeting. Please let me know if my counting sucked and you are missing any bits.

I'm recruiting! As mentioned at Xmas this will be Kate Berry's final year as designer. I'm looking for someone interested in doubling up with her to learn the ropes – and poles -and hanging – and lighting etc. I'm also looking for a 'Registrar' to be part of the IQ committee. Someone to oversee the documentation and movement of the entries. A list maker, checker, double checker, ticker of boxes, nothing gets past me without my say so person. With on-line entries there should be little data entry but I need someone who loves to be thorough and organised to keep the wheels rolling. Zooming and Drop Box is making it all very easy to meet up and work remotely so you can be based anywhere.



Lynne Hargreaves
Island Quilt Convenor

Oh what a day!

Whether it was from enforced isolation, stress arising from the threat of Covid or even sadness left over from the horrendous bushfires of 2019/20, there seemed to be a genuine need for a good ol' knees up! And the 2020 Christmas Friendship Day was just the place to do it!



First there was the setup: tables to be decorated, baubles to be hung, boxes to be unpacked...the members worked tirelessly the night before the big day!



The Committee, in their wisdom (?), decided that the dress of the day was to be Christmas themed so here they are in all their elvish loveliness!



Once the official stuff was dealt with by our President elf, we were free to kick up our heels like ten lords a-leaping!



On the day we had the help of the wonderful CWA ladies...a big "thank you" from all of us!

Oh what a day!...continued...



There was show-and-tell...



...postcards to be swapped...



...legs to be flashed...



...and prizes to be won!



Best of all,
there were
lots of happy
faces!





'An Owl and Two Mice'

(finished size - 46 cms/ 18" W X 61 cms / 24" H)

Space will be limited due to Covid19 restrictions.

Lesley R Lyons, Workshop Convenor

03 64283198/0417 871 478

Workshop with Barbara Mellor

Date: May, 1st and 2nd, 2021

Perth Community Centre, 17 Fairtlough Street, Perth

McKenna Ryan Background Panel is available in various colours from Annies Cottage Craft, St Helens. Mobile 0428 882 563.

info@anniescottagecraft.com.au

COST: \$80 and includes use of paints and brushes. A \$25 deposit is required to secure your place. Payment to be paid into TQG account.

Requirement details will be sent on deposit into Guild account and booking details sent to lesleylyons1@hotmail.com

DIRECT DEPOSIT

TAS QUILTING GUILD INC.

BSB 067 600

A/c# 107 339 63.

Quote Workshop,

Your Surname and Membership No.

Hi, my name is Leesa Greenacre

I'm the Vice President and membership secretary.

Thank you all for joining in and being a part of the Tasmanian Quilting Guild.

We have a new member, Robin Clark. Congratulations Robin, I am excited on behalf of the Tasmanian Guild to offer you a warm welcome to our thriving membership. I ask all of our members to warmly greet Robin, and any person you may not know, perhaps share your stories about your quilt journeys.



On the surface, TQG is an umbrella for creative sewers to get together, provide insurance to our groups and, of course, fellowship.

In our last newsletter I coined a new phrase...*The Tasmanian Quilting Guild is "the thread that binds us coast to coast!"* What do I mean? Along with the rest of the committee I have been having a closer look at the make up of our membership.

The numbers show us that we now have 216 financially active members. Added to this are roughly 27 groups scattered all over the island, from Queenstown to St Helens. We are lucky to have passionate retailers dedicated to improving our creative journey in the north west; the north, north-east; over on the east coast and in the south. Here we can go in and touch the fabric and learn new skills; not to mention the long-arm quilters who help many of us turn a quilt top into a bona fide quilt.

So, when we dive a little deeper, we can see that we truly are a creative community spread out coast-to-coast, whose threads are connected and woven together under the umbrella that the Tasmanian Quilters Guild provides.

Cancellation notice

After consultation with the Brighton Council and a meeting of the **Quilters Easter Showcase** organising committee, we have unfortunately decided that holding the Showcase this year is not going to be feasible as restrictions would make it very difficult.

Hopefully everything will have settled down later in the year and restrictions on numbers etc eased and we can look forward to a bright new event in 2022.

Thank you for your support of the Quilters Easter Showcase over the years and we look forward to seeing you all next year.



**The Tasmanian Modern Quilt Guild
Presents: Jane Davidson
aka QuiltJane**



Workshop: Saturday 5th June — Blooming Dresden



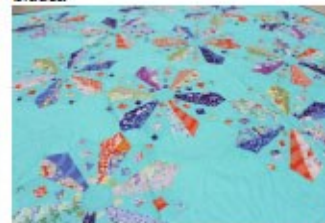
Learn to make pieced Dresden blocks

Class - 6 hour duration

Goal - Students make one pieced Dresden flower block, 24" x 24"

Pattern supplied with class. Acrylic templates available.

There are 3 variations for the completed block - (A) traditional blocks (pin wheel, churn dash and 9-patch); (B) traditional blocks + sparklers; (C) sparklers and simple blades.



Rockpools quilt is a combination of block (C) and applique.

Workshop: Sunday 6th June — Grey Matter



Scrappy quilt

Learn to prepare 60 degree diamonds, sew y-seams and different methods of appliqué

Class - 6 hour duration

Goal - Students make one appliquéd, block

Pattern supplied with class. Acrylic templates available for purchase.

Venue: Newtown Bay Rowing Centre, Marine Parade, New Town, Tasmania

Time: 10 am—4 pm

Cost: Class TMQG/TQG members \$100 Non-members \$125 per day
OR

2 day cost \$175/\$200

contact: tassiemqg@gmail.com

News from around the state

In the south....Tina Thain

Welcome to a brand-new year full of stitching, friendship and inclusiveness. It has been lovely speaking to quite a few of our southern groups over the last few days. Below you will find a quick overview of what each is doing:

Beachside quilters are now meeting Okines Community House in Dodges Ferry on a Tuesday 10 - 12 Noon. New members are always welcome.

I had a lovely chat with Jan Moore from Channel Quilters (0428674265). Channel Quilters have a great association with Care Quilts with 3 quilts currently on the go at the moment. I believe these are based on Australian animals. Hopefully I will have some show and tell photos for the next newsletter.

Come Quilting Loose Threads have resumed their meetings and again a worthwhile project being Care Quilts being worked on most weeks. Show and Tell is held on first Wednesday of each month with Feb theme being Pastels and March - Quilt as You Go. Jenny Croxton is your contact person Mob: 0447921393

Sommers Bay quilters are unfortunately looking at disbanding due to low numbers and the age of each member.

Tasmanian Modern Quilt Guild is back, with a great sewing day already held. I have been advised that the Modern Quilt Guild is hosting a Jane Davidson Workshop - 5th and 6th of June. Numbers are limited due to Covid Restrictions so you will need to book in early. See the details on page 9 of this newsletter.

Stitching and Beyond are back with limited meetings. Unfortunately, Friends School is still unavailable. The Monday group is continuing as usual on the third Mondays at Kingston. They are currently putting together the 2021 workshop program, a mixture of one and two day workshops, led by Tasmanian artists. And although this years workshop program will not feature any international tutors for obvious reasons, as soon as they are able, they plan to host Dorte Jensen who creates stunning quilted portraits (<http://www.stofbilleder.dk/>). The 2021 Challenge theme is soon to be announced, and this year will also see their biennial *Out of Hand* exhibition at the Long Gallery late September. The group is exhibiting pieces from their 2020 challenge and will be on display at the following venues:

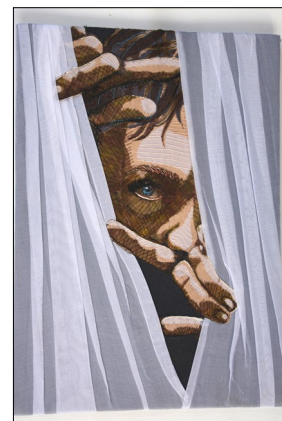
Gone Rustic, St Marys: January/February
Launceston Library: April 12 - 30
Kingston Library: July 3 - 28
Long Gallery Salamanca: Sept 22 - Oct 4

More information can be found on the group's website

<http://www.stitchingandbeyond.com/>



Ursula Harris *Emerge*



Ros Wren *Indecision*

Until next time everybody, be kind, be inclusive and most of all enjoy your stitching.

We all need some sunshine in our lives.

In the north.... Karyn Leary

Launceston Patchwork & Quilters had to share this beautiful photo of two of their well loved members, Bet Woods and Brenda Langdan, of L.P.Q. at their High Tea



for turning 90 years young last year. The group finished off 2020 with two well attended Christmas Lunches. One at Legana Tavern on 10th of Dec, then Tamar Cove on the 12th of Dec.

A great start to 2021 with four of our members having open homes. A very big thankyou to our hosts Corrie Szopko, Jo Quigley, Leonie Champ and Denise Eddy. Lovely days which were all well attended.

Then back to our new normal 10 - 2pm at Punchbowl Christian Centre on the 4th February in the Hall. We are so fortunate to have that opinion.

Can I please put out a request to any of the northern groups: if you have anything you would like to add to our future newsletters please text me on 0417309358

Deadline for next newsletter is 28th April.
Cheers



CALL FOR ENTRIES

Closing date 30 April 2021

Art Quilt Australia 2021 including Expressions: the Wool Quilt Prize

Open to residents of Australia and New Zealand and Ozquilt Network members worldwide.

For more information visit www.ozquiltnetwork.org.au



f #artquiltaustralia2021



**DEVON
PATCHWORKERS
AND QUILTERS**

FRIENDSHIP DAY

27 February 2021

10.00 am - 3.00 pm

**Devonport Soccer Club
50 Lovett St Devonport
(near the Valley Road intersection)**

BOOKINGS ESSENTIAL

Name and contact number for each attendee must be provided at time of booking.

Book soon - places are limited

NO BOOKING - NO ADMISSION

BYO - Lunch, Mug & Stitching.

Bookings — text or email
Jenny Oakley: 0409 304 905 or
jenny.oakley1@gmail.com

TASSIE SHOPS & BUSINESSES

NORTH

Esme's Patchwork

Shop 1, 216 Charles St. Launceston, Phone 0473948037 Open: 10am-4pm Monday-Friday and 10am-1pm Saturday.
website: www.esmes.com.au email: lil.a@bigpond.net.au Patchwork and Quilting, Haberdashery, Needlecraft.

Patchworks Plus

14 Anne Street, George Town. Phone 03 63823999 Open Tuesday - Friday 9.30am-4.30pm.
Saturday 9.30 am-12.30 pm <http://patchworksplus.com.au> email info@patchworkplus.com.au

Threads by the Sea

14 Louisa Street, Bridport. M: 0428 661612. Open Wed - Fri, 10- 4 pm and Saturday 10 to 2 pm (except first Saturday of the month)
<https://www.facebook.com/Threadsbythesea>

NORTHWEST

Stewarts Sewing Machine Centre

23 Hillcrest Road, Devonport. Open 9am-4.30 Mon-Fri, 10-12 Saturday, Phone 03 64245440 r.stewart2@bigpond.com

Wells Clothing and Craft

108—114 Gilbert Street, Latrobe Phone 03 6426 5000

Quilt Top Quilting (Pam Jarman)

12 Cranwell Street, (P.O. Box 808) Burnie Phone: (03) 6431 3650 Open: by appointment Longarm Quilting Service

Cranberry Crafts

71 Reibey St Ulverstone Phone: (03) 6425 1077 Fax: (03) 6425 6939 email: info@cranberrycrafts.com.au
Open: 9:30am-12.30pm Tuesday. Weds-Saturday 9.30-3.00pm www.cranberrycrafts.com.au Quilting supplies

Apple Patch Quilting & Craft

68-72 Bass Highway, Coee 7320 Open Mon-Fri 9am to 5pm, Sat 9:30am-2pm, Sun 10am-1pm www.applepatch.com.au
email: info@applepatch.com.au Patchwork, quilting, haberdashery, needlecraft, wool & yarn, classes & custom sewing & quilting.

Light NC Fabric & Party

30 Goldie Street, Wynyard. Ph: 0419510411. E: svetla@lightnc.net www.lightnc.net Quilting fabrics & notions; balloons, party supplies, wedding hire, costumes and cake decorations for your special event.

SOUTH

Frangipani Fabrics

313 A Elizabeth Street North Hobart Phone: (03) 6224 0244 Open: 9.30am-5.30pm Mon to Fri, 9.30am-4.00pm Sat.
www.franfab.com.au Email: sales@franfab.com.au Fabrics, books(incl lending library), haberdashery & classes. Mail orders welcome.

Easy Sew and Possum Patch

122A Elizabeth St, Hobart, Phone & Fax: (03) 6234 5616 Open: 9.00am-5:30pm Monday – Friday, 9:30am-3.00pm Saturday website: www.easysew.com.au email: mail@easysew.com.au <https://www.facebook.com/Easysew>
Sewing machines, fabrics & sewing essentials

Quarter Inch

224 Campbell Street, North Hobart, Phone (03) 62001304 <http://quarterinch.com.au> helen@quarterinch.com.au Home of Hugs 'n Kisses and Pattern Press, Purveyor of cloth, needle and thread, classes, café, dog friendly.
<https://www.facebook.com/quarterinch>

The Patch Works

91 Patrick St, Hobart, Phone: (03) 6234 2279 Open: 10.00am-4.00pm Wednesday-Friday, 10.00am – 2.00pm Saturday.
www.thepatchworks.com.au email: equiry@thepatchworks.com.au Fabrics, classes & quilting supplies

Wafu Works

18 Beach Road, Kingston Beach, (03) 6229 1420 www.wafuworks.com.au jan@wafuworks.com.au Open Tues-Sat 10am-4.30pm.
Vintage Japanese Textiles for quilters, textile artist and collectors

The Quilted Teapot

6 Bathurst Street New Norfolk, Phone 0415 119 322 www.thequiltedteapot.com/about/
Open Mon-Fri 9am-4pm & Sat 9am-2pm Patchwork & quilting. Serving light refreshments.

Quilt a Kit

E-mail: info@quiltakit.com.au Phone: 0417 469 644 Website: www.quiltakit.com.au

Business owners: are your details up to date? Address? Opening times? Contact details? Etc

Guild members: do you know any new businesses that would like to be listed here?

Please send updates, recommendations or queries to:
michelle.tggeditor@gmail.com

Traditional Quilting in England and Wales

By Helen Ducker

I first met wholecloth quilts in Shipley Art Gallery in Gateshead, Tyneside. I looked and looked, and then read the labels identifying them as North Country or Welsh or American Amish. After a while I could see the differences. Wholecloth quilts are made from one piece of plain fabric, with perhaps a patterned fabric on the back. With no patchwork, the interest is solely in the quilting patterns.

In the North Country quilting clubs were set up to finance the purchase of fabric, with a miner's widow doing the quilting in her home to cover her family's living expenses. The patterns are beautiful and elegant with a large central motif and a flowing border, with a geometric filler pattern of squares or hanging diamonds between. Skilled people travelled the valleys marking quilts for a fee. The filling layer was cotton from the cotton mills.

In Wales it was also a cottage industry using local wool woven in small local mills for the tops and wool gathered from fences and hedges and carded at home for the filling. Here, quilts were mostly made for the family, and were marked out with strings. Household objects were used to make templates for the shapes. The centre was a large motif enclosed in a double lined square, with the border divided into sections. Popular motifs were stylised flowers, leaves and paisleys, with spirals and heart used as fillers.

Originally the edges of quilts in both areas were folded inwards and held together with two rows of stitching along the edges. This is called a butt or knife edge.

In the 1920s a Rural Industries Board was set up to encourage rural crafts. Quilting groups were set up in both areas, which raised quilting standards and produced quilts in more expensive fabrics to be sold to London hotels. This created an income for the quilters.

References and Pictures

Carolyn Gibbs, quilt historian shows wholecloth quilts in a video

https://www.youtube.com/watch?v=ujVMP7Tt6IA&ab_channel=CarolynGibbsQuilt

Kate Trusson, a North Country quilter keeping the tradition alive in Swaledale.

<https://www.pandmagazine.com/news/article/north-country-quilter/137>

Helen Barnes shows templates for the North Country patterns

<https://helenbarnestextiles.co.uk/wholecloth-quilts/>

Pippa Moss, quilter and bellringer explains the differences with maps and pictures from her collection of old quilts

<http://welshquilts.blogspot.com/2012/01/difference-between-welsh-and-durham.html>

The Rural Industries Bureau

<https://helenbarnestextiles.co.uk/rural-industries-bureau-scheme/>

<http://welshquilts.blogspot.com/2017/04/designed-rbi-welsh-quilt.html>

Appraisal Report

The Appraisal Committee met in September 2021. It was great to have 7 quilts to appraise.

We keep being asked what is involved when appraising your quilts. There are 2 very good articles on the website and have been for quite sometime but are still relevant today. Worth reading.

The next Appraisal day is 17th April. Hope you consider having quilts appraised. All information is on the website and you can ring either Sharon Thomson or myself for forms if you need them and don't have a computer. Our contact information is:

Marlene 63447467 or Sharon 0437752194

More information can be found here: <https://tasquiltguild.com.au/appraisals/>

Marlene Boatwright

Appraisal Convenor

Advertising Rates For Island Threads

Please Note:

- Finished artwork is required for all advertising submissions
- Articles can be supplied as typed/written copy, USB or email
- Good quality photographs and illustrations can be reproduced
- Island Threads is published four times a year: February, May, August and November.
- Send articles/advertisements to:
Email: michelle.tqeditor@gmail.com
 Or TQG Newsletter Editor
 PO Box 181 North Hobart TAS 7002

Payment must be made when advertisements are submitted. Payments may be made either by cheque money order or direct deposit.

Bank Details:

Name of Bank: Commonwealth Bank of Australia
Branch No: (BSB) 067600

Advertiser	Rates (\$) Per issue		
	1/4 Page	1/2 Page	Full Page
TQG	\$12	\$20	\$35
Local Business	\$25 or \$75 for 4 Issues	\$50 or \$175 for 4 issues	\$100 or \$300 for 4 issues
Commercial			\$250 or \$800 for 4 issues
Directory of Patchwork and Quilting Businesses		\$10 for 4 issues for a 12 month period. Maximum of 6 lines, single column, A4 page.	

NEED ANY FORMS?

Forms are available on the Guild's website. If you do not have access to a computer to download forms, please feel free to contact a member of the Committee of Management to arrange for it to be sent to you. We are here to help.

CONTRIBUTIONS AND LETTERS

- * All contributions and letters will be considered for publication. The editor's decision to shorten or otherwise edit copy is final.
- * Anyone wishing to retain copyright of material should add their full name and the year to the end of their article.
- * Written contributions or printed photographs will only be returned if accompanied by a stamped, self-addressed envelope.
- * Digital images for publication must be of high quality - at least 150dpi.
- * Do not send files in PDF format as files saved this way will not be used.
- * If photographs are taken at exhibitions, that are to be used for submission, they **MUST** include the author (eg, who made the quilt), the designer (who made the pattern), any other person involved (the quilter), the photographer and the date of the photo.

Reproduction in whole or part of material, including illustrations, in ***Island Threads*** is strictly prohibited without permission from the Editor. The Guild is not responsible for the content of advertisements or the products offered by advertisers, and these products or services are not endorsed by the Guild.

Committee of Management

President	Yvette Gilligan	yvettegilligan@hotmail.com	0437218091
Vice President/ Membership Secretary	Leesa Greenacre	threadsbythesea@gmail.com	0428661612
Secretary	Gaye Marshall	gayetqg@gmail.com	0499088850
Treasurer	Danelle Griffin	danelle_griffin@hotmail.com	0409977247
Newsletter Editor	Michelle Murden	michelle.tqgeditor@gmail.com	
Exhibition Convenor	Lynne Hargreaves	hargreaves.lynne@gmail.com	040531115
Northern Rep	Karyn Leary	Karynleary@live.com.au	0417309358
Southern Rep	Tina Thain	tmthain@netspace.net.au	0414586270
North West Rep	Position vacant		
Website Manager	Disa Cragg-Ohlsson	snuva.tas.au@gmail.com	0409642825
Appointed Roles:			
Workshop & Activities Convenor	Lesley Lyons	lesleylyons1@hotmail.com	64283198
Appraisal Convenor	Marlene Boatwright	mbw9@bigpond.net.au	63447467
Appraisal Administrator	Sharon Thomson	shanni1@internode.on.net	0437752194
Auditor	Lynne Makepeace		
Public Officer	Gaye Marshall	gayetqg@gmail.com	64243686
Retreats	Lorraine Hyland	lorraine.hyland@bigpond.com	0428422305
Historian	Helen Ducker	helenducker@gmail.com	

Aims of the Tasmanian Quilting Guild Inc.

- * To promote the art and craft of Patchwork and Quilting.
- * To bring quilters together from all parts of the state.
- * To encourage the establishment of affiliated groups.
- * To encourage and maintain high standards of workmanship and design in both traditional and contemporary quilting.
- * To foster interest in the history of patchwork and quilting.
- * To organise exhibitions.
- * To publish a newsletter.
- * To arrange for the giving of lectures to members of the Guild on subjects of concern or interest to them.

A special message from Greg Alexander, Managing Director, BERNINA Australia

To our wonderful Island Quilters we hope that you are managing well in these truly challenging times. Please stay safe and look after yourselves, we will come out of this stronger than ever I am certain. We have so many more quilts and projects to make, complete and create!

Take care and hope to see you all soon
G

SMALL SPACES.
BIG IDEAS.



BERNINA Q 16 Foldable Table with Adjustable Height

Sometimes your quilting dreams are bigger than the space you have. The BERNINA Q 16 Foldable Table with Adjustable Height is the perfect solution.

It is spacious enough for your biggest projects, sturdy enough to handle all the performance features of the Q 16 Longarm and discreetly tucks away when not in use.

Make Your Quilting Dreams Come True

When it comes to a BERNINA Q Series Longarm Quilting Machine, seeing isn't believing. Trying is.

Visit a BERNINA store today and become the longarm quilter you've always wanted to be.



Find your specialist
BERNINA Q Series Dealer at
www.bernina.com.au or
call Toll Free 1800 237 646



made to create **BERNINA**