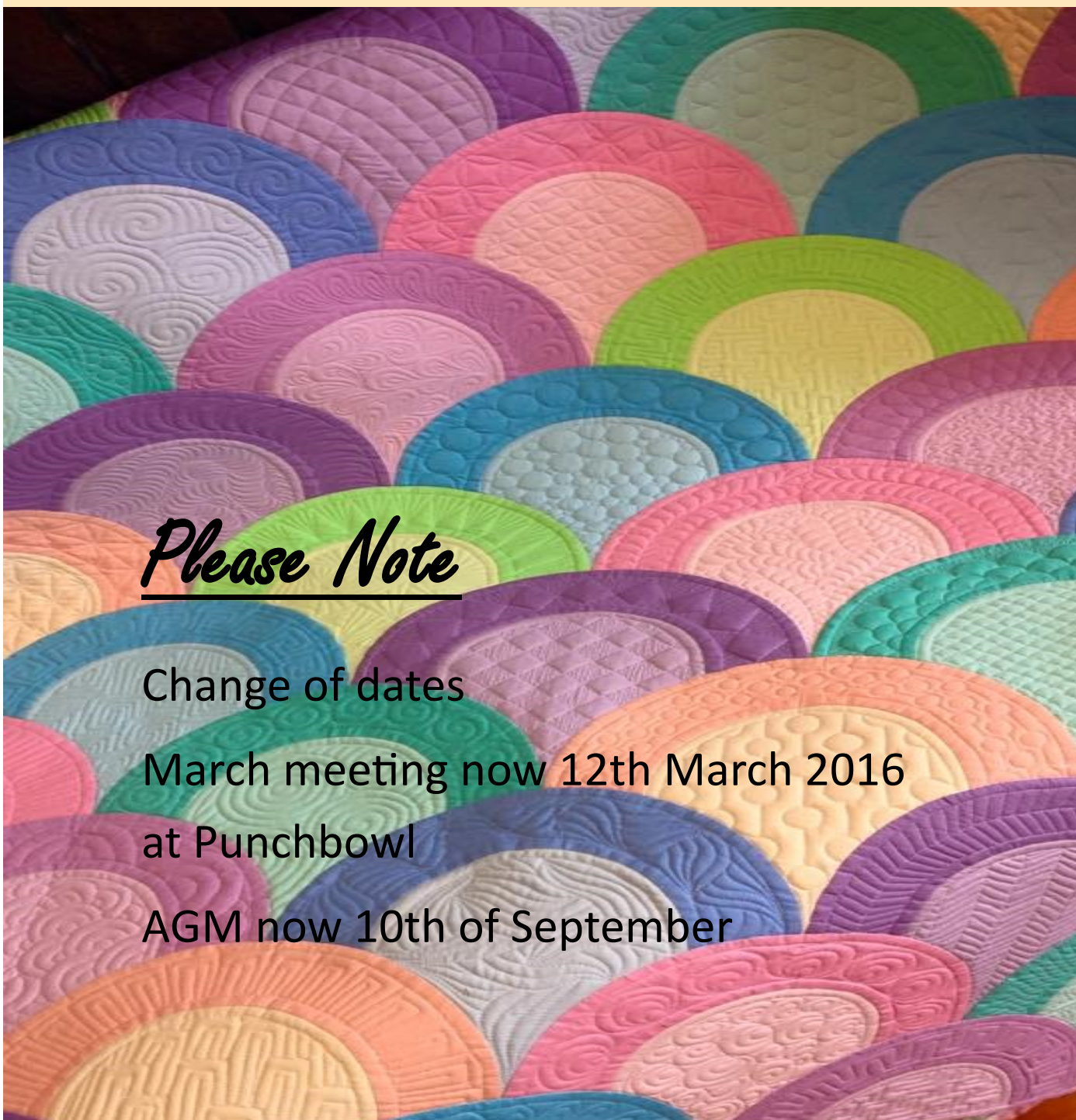


Newsletter of the Tasmanian Quilting Guild  
Inc. PO Box 181, North Hobart, Tasmania  
7002  
[www.tasquiltguild.org.au](http://www.tasquiltguild.org.au)



# ISLAND THREADS

Volume 33, Issue 1



## Please Note

Change of dates

March meeting now 12th March 2016  
at Punchbowl

AGM now 10th of September

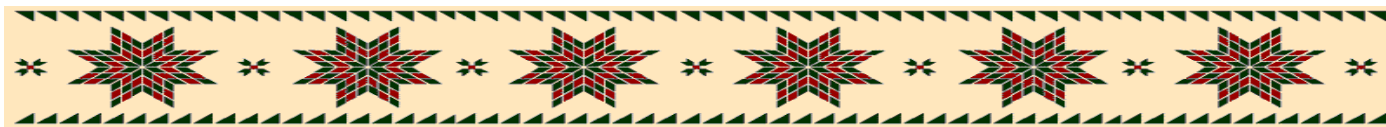
---

# Table of contents

---

Page	Topic
3	Welcome to new Members
	The Committee of Management
4	From the President
	Profile Kate Berry
5	<b>Dates to remember</b>
	Stop Press Poatina Retreat
6	Application for Retreat
7	Profile Jenny Croxton
8	Tasmanian Art Quilt Prize
9	Quilter's Husband Lament
10	Tasmanian Quilting Guild Website
	A note from Judi Spurr
11—14	Spotlight on Southern Quilt Stores
15—19	General Meeting Minutes
19	Winner of the Rotary Textile Challenge
20	Report—Australian Council Of Quilters
21—23	Affiliated Groups
23 –24	Tasmanian Quilt Stores
25—28	Valuation report and form
29—30	Exhibition Convenors Report
31—32	Notices
Back Page	Bernina

---



# Welcome to our new members

Welcome to new members and new groups. We hope you enjoy gathering with other quilters and are able to participate in Guild meetings and activities throughout the year.

Crazy Quilters  
Lilydale Moderns  
Fiona Ransley  
Karen Womersley

## The Committee of Management

Role	Address	Email	Phone
<b>President</b> Alison Howlett	4 Glenrose Drive Tea Tree Tas. 7017	alisons_laptop@hotmail.com	0419 589 278
Vice President Wendy Fittler	14 Burnett Street George Town Tas. 7253	wfittler@bigpond.com	03 6382 1816
<b>Secretary</b> Margaret Treloar	P.O. Box 39 Lilydale Tas. 7268	mrtreloar@bigpond.com	03 6395 1137
<b>Treasurer</b> Susan Holdcroft	PO Box 215 Lilydale Tas 7268	susanbholdcroft@hotmail.com	0419 708 280
<b>Newsletter Editor</b> Wendy Townsend	1 Cherry Crt Forcett Tas 7173	wendyjoytownsend@gmail.com	0422274279
<b>Exhibition Convener</b> Kate Berry	3 Taroona Crescent Taroona	<a href="mailto:katequiltercygnet@gmail.com">katequiltercygnet@gmail.com</a>	0408 035 079
<b>Northern Rep</b> Karyn Leary	12 Benjamin Street Trevallyn		0417 309 358
<b>North Western Rep</b> Janine Richardson	10 Halstead St., Burnie 7320	<a href="mailto:janinerichardson2000@yahoo.com.au">janinerichardson2000@yahoo.com.au</a>	6431 6299
<b>Southern Rep</b> Jenny Croxton	232 Nelson Road Mt. Nelson 7007	<a href="mailto:jmcrox@netspace.net.au">jmcrox@netspace.net.au</a>	6225 3503

### Appointed positions

Historian: Helen Ducker

Valuation: Marlene Boatwright

Valuation Administration: Sharon Thomson

Website Manager: Wendy Townsend

# From the President

Hello Ladies and Gents

Hope you are all enjoying this beautiful sunshine and getting time to spend stitching. To all those who are affected by these recent fires our thought and prayers are with you and hope you are all safe. A huge Thank you to the Firies for looking after us all.



Well we seemed to have turned a significant corner with our Island Quilts Exhibition. We have a date and a venue and more importantly we have a convenor.... 16th to 18th of September 2016 at the Grandstand Pavilion at the

Hobart Showgrounds. Kate Berry has offered to be our convenor and I know we will all show our support and put on a great exhibition. So please be involved and experience the beginning of something special.

This also means that it's back to the fabric and thread and start producing a quilt for the show... Don't forget to enjoy the process and have fun creating.

Now we also had to change the date for the March meeting to the 12th March so I hope you can all make it.



## Profile Kate Berry



I have been making quilts since the 1980s, with the quantity and quality of my quilts waxing and waning depending on the other things happening in my life including work as a scientist at CSIRO, 4 children, 2 grandchildren, elderly mother, gardening, and presently moving house to lovely Cygnet. I am a traditional quilter, making colourful machine quilted pieces or more peaceful hand quilted quilts. The highlight of my quilting life was winning Best of Show at Island Quilts in 2006. This quilt, Kelp and Friends, was made of 100% silk- fabrics, batting and machine quilting thread, and remains the most innovative quilt I have made. My favourite quilts, those that I would

save in a fire, are the ones I have hand quilted.

My work as a marine chemist measuring ocean acidification includes annual 2 month ship voyages to the Antarctic or elsewhere. We work busy 12 hour shifts every day on board (no weekends!) but as there are no domestic duties I have a regular time each day for hand quilting. I find that this quiet, creative time is vital to maintaining a happy outlook on a long voyage. Thanks goodness for quilting!

In 2015 I undertook a quilt judging course at Quilts Canada, Canada's national juried show. I did white glove duty at the show for a couple of afternoons which was fun, meeting lots of Canadian quilters. I was one of the judges for the Tasmanian Art Quilt Prize in 2015, and while I maintain a strong interest in judging I have decided to take on the convenor role for IQ 2016 as the Guild's need is greatest for this.



# DATES TO REMEMBER 2016

## Tasmanian Quilting Guild Events

ITEM	DATE		LOCATION
<b>Newsletter</b>	May 2016 August 2016 October 2016	<b>Articles to Editor by</b> 30 <sup>th</sup> April 2016 30 <sup>th</sup> July 2016 29 <sup>th</sup> October 2016	
<b>Committee Meeting</b>	16 <sup>th</sup> April 2016 16 <sup>th</sup> July 2016 15 <sup>th</sup> October 2016		Ross " "
<b>General Meetings</b>	12 <sup>th</sup> March 2016 18 <sup>th</sup> June 2016 10 <sup>th</sup> September 2016 3 <sup>rd</sup> December 2016	<u><b>NOTE THE CHANGE OF DATE</b></u>  <b>AGM</b> Christmas Lunch	Punchbowl " " "
<b>Friendship Day</b>	27th February 2016	Friendship day 10 - 3 Devon Patchwork & Quilters Devonport	Admission \$10 BYO Lunch
<b>Retreats</b>	11 <sup>th</sup> – 15 <sup>th</sup> May 2016 18 <sup>th</sup> – 22 <sup>nd</sup> May 2016		Poatina
<b>Island Quilts</b>	16—18th September 2016		Royal Hobart Show- grounds

**STOP PRESS**

More people are required for the second retreat, so if you are interested please contact Zoe Johns,  
zoejohns@bigpond.com or 6331 2723

# Poatina Retreat for 2016

TASMANIAN QUILTING GUILD INC.

ANNUAL POATINA RETREAT 2016

1. Wednesday 11<sup>th</sup> May – Sunday 15<sup>th</sup> May 2016
2. Wednesday 18<sup>th</sup> May – Sunday 22<sup>nd</sup> May 2016

<b>Name</b>	
<b>Phone number</b>	
<b>Address</b>	
<b>Postcode</b>	
<b>Email</b>	

Please circle when attending.

Hostel (share)	Wed – Sun \$272.50	Thurs – Sun \$210.50	Fri – Sun \$148.50
Hostel (single)	Wed – Sun \$352.50	Thurs - Sun \$270.50	Fri – Sun \$188.50
Motel (twin share)	Wed – Sun \$352.50	Thurs – Sun \$270.50	Fri – Sun \$188.50
Motel (single)	Wed - Sun \$512.50	Thurs – Sun \$390.50	Fri – Sun \$268.50

DEPOSIT OF \$30 (NON REFUNDABLE) IS REQUIRED BY 7<sup>TH</sup> DECEMBER 2015.

TIME OF ARRIVAL: \_\_\_\_\_ TIME OF DEPARTURE: \_\_\_\_\_

- Double rooms available in Motel.
- 3 shared rooms available in Motel.
- Each bed in Hostel comes with bottom sheet & pillow case extra linen costs \$5 will be added to cost.

Special dietary requirements:

Prices quoted for Dinner the night you arrive to Lunch the day you leave. You are welcome to arrive before lunch, but must make your own arrangements and payment.

Please make cheques payable to the Tasmanian Quilting Guild Inc. Post to:

Workshop convenor (Poatina Retreat), Tasmanian Quilting Guild Inc. P.O. Box 181, North Hobart, Tas. 7002 by the 7<sup>th</sup> December 2015.

Direct deposit to TQG CBA Account No 067600 10733963 Deposit reference:

Two Retreats will depend on numbers attending, first in first accepted, 20 only for first retreat, must be a minimum of 10 for second retreat.

FULL PAYMENT BY 18<sup>TH</sup> APRIL 2016

NO REFUNDS AFTER 22<sup>nd</sup> APRIL 2016

## *Southern Rep Jenny Croxton*



I am a proud Tasmanian by birth and ancestry, and a retired high school teacher by trade. I was born and grew up in Launceston, went to Uni and eventually married in Hobart. Because of my first husband's work, Cooma in NSW was my home for around 20 years, where I raised two daughters, who don't sew. I returned 'home' 21 years ago, and settled in Hobart.

I joined TQG in 1994 or 1995. I have served as Secretary and Newsletter Editor, participated in one of the revisions of our Constitution and managed sponsorship on the Exhibition Committee. Now I am recycling myself as Southern Rep.

As a child, I hated sewing, because as a 'leftie', I never got those directional stitches right.

At around sixteen, I can't remember why, I used Mum's old Pinnock, a pattern and a pretty blue cotton to make a simple shift dress. Eventually, I became quite skilled, by following increasingly complex patterns and a bit of 'what if?' experimentation.

During young motherhood, I tried all sorts of needle crafts from the "Golden Hands" series. Somewhere in there I joined those ubiquitous Sheridan sheeting offcuts into a little girl's bed quilt and doona covers, as my first patchwork. During that time, in Cooma, I looked after the wardrobe of the local amateur theatre, which involved some interesting sewing challenges.

When I returned to Tassie 20 years ago, quilting had become my main sewing joy, and still is. Countless 'learning experiences' (a.k.a UFOs) lurk in the depths of my sewing room.

My quilting style tends towards traditional, my quilts are usually small, and I love appliqué, especially needle-turn. I do however enjoy trying new techniques and I intend to explore some soft-edge machine appliqué and want to improve my machine quilting. I'll just have to make sure I practise, practise, practise!



# Tasmanian Art Quilt Prize Report

The exhibition was very successful. The Governor, Her Excellency Professor Kate Warner opened the exhibition and made it very special. Many of the finalists were at the opening and two finalists flew in from interstate.

## **Congratulations to -**

Katherine Jones (Tas.) winner

Sandra Champion (Tas.) Runner up

Helen Godden (ACT) and Laraine Pickett (NSW)– highly commended

Laraine Pickett (NSW) Viewer's Choice

We were very happy with the judging. They were very happy with the standard.

## **Travelling Exhibition- Pip Scholten is in charge .**

February -Wonders of Wynyard

March meeting display of members quilts.

April submission has been made to AQC

June long weekend - Bay of Fires Arts festival

August – St Marys –Gone Rustic

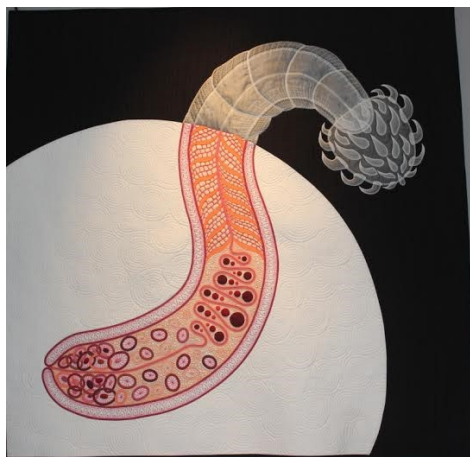
Island Quilts 2016

The Gloria Loughman Workshop was excellent, and the class was full . Thank you to Chris Hussey and Stitching and Beyond for organising this.

Thank you to the entrants, the sponsors and all the members who visited the exhibition and to the TAQP committee for their support and sacrifices they have had to make as a result of this program.

## **Budget**

We have made a profit of just over \$600 . I intend this to be set aside for advertising for next time.



The Winner



Her Excellency the Governor at  
the official opening





# Quilter's Husband Lament

I've always learned that life was full of obstacles and woes.  
I've learned to live with sickness, death, taxes, heaven knows.  
I've taken all these things in stride, the problems and strife,  
But one I didn't count on was a Quilter for a wife.

Come home from work, the stove is cold, the dirty clothes still there,  
The suit I wanted cleaned today, still laying on the chair.  
"Where's Mama, son?" I asked my boy, "This house is such a mess.  
Why, all the sheets are missing, we've been burglarized I guess."

"No, Mama stripped down all the beds and took the sheets away.  
She cut them into little strips and pieced two quilts today."  
"Why every pair of pants I own is cut in little squares."  
"I'm demonstrating appliqué my lovely wife declares.

I show up in the office in my boxer shorts and tie.  
My secretary giggles and the clerks give me the eye.  
It's freezing cold, I'm shaking and my knees are turning blue.  
My boss considered firing me, but his wife's a quilter too.

I told him what happened and he said he could believe.  
I noticed that the coat he wore had only half a sleeve.  
A husband needs a loving wife to help him when he's ill.  
To soothe and comfort, mop his brow and help him take his pills.

Should influenza strike you, your life's not worth a dime,  
Particularly if it hits at Quilt Convention time.  
You'll lay there in an empty house in pain and deep despair,  
While the workshops and the lectures keep your wife's attention there.

You learn to ask no questions when she smiles and drives away,  
Rushing to the Fabric Shop for a big sale there today.  
She's gone for hours, then drags back home all bleary eyed and down,  
Now who'd believe a lie like that? She must be running round.

But I'll get by, I always do, some days are fine, some not.  
When your wife's a Quilter you tolerate a lot.  
I know that when my life is through and I have passed away  
They'll have to set my funeral so it's not a Quilting Day.

-Author Unknown-



# *The Tasmanian Quilting Guild Website*

<http://tasquiltguild.org.au/the-tasmanian-quilting-guild-website/>

This website is designed to be user friendly and accessible to both members and the public.

There is a members only area where you can access back copies of the newsletter and forms.

This area is password protected and the password is tasquilt2015

Please let me know if there is anything you would like added to this area

Contributions and suggestions will be welcomed and encouraged. Please let me know if there is anything you would like to be added to the website.

Wendy Townsend

Website Manager

## *A note from Judi Sparr*

Thank you for directing PAULA WELLAND from Sussex to Aberdell Haven Quilters. Paula rang Wednesday hopefully to be able to come to our meeting but unfortunately we are not returning until Feb. as Paula was free on Friday I offered to get a few ladies together and thank those who were able to come and help to make the afternoon very enjoyable. We had a fantastic show and tell made more interesting by Andrea Kimber coming after Care Quilts to show us several charity quilts that had been sandwiched today. Those attending came from both Aberdell H Q and Quilt Inn members.



# Spotlight on our Quilt Stores—South

## Frangipani Fabrics

78 Queen St Sandy Bay, Hobart. P 62240244 W [www.franfab.com.au](http://www.franfab.com.au) E [sales@franfab.com.au](mailto:sales@franfab.com.au); or find us on Facebook <https://www.facebook.com/frangipanifabrics> or Instagram @frangipani\_fabrics\_tas

Open Monday – Friday 9:30-5 and Sat 9:30-4.

Modern fabrics and Indigenous fabrics & beautiful sewing patterns and kits from Hobart, Tasmania.

At Frangipani Fabrics our first love is modern fabrics and quilts. We're so excited to be part of the modern quilting movement that is going global at the moment & try to fill the shop with modern fabrics (including Cotton and Steel, Tula Pink, Carolyn Freidlander and Cloud 9) and patterns (Elizabeth Hartmann, Jess Frost, Jaybird Quilts, Zakka Workshop and Carolyn Freidlander).

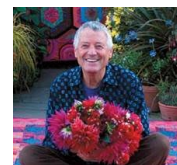
We also have over 50 Indigenous and Kaffe Fassett fabrics in stock, and a unique collection of Japanese fabrics, blenders and good quality homespun including Kona, Cotton Couture, and Bella Solids. We love working with wool felt and other natural fibres and sell sewing projects with a difference that we know our customers will enjoy. We also specialise in modern soft toy patterns and supplies (we're big fans of Ric Rac and May Blossom).

We also have a sewing class nearly every day of the week - beginners are always welcome (even if you've never sewn a stitch!) If you're passing through Hobart please drop in. If you can't make it in we have FREE POSTAGE IN TASSIE and our website is updated weekly!

**Classes:** We have lots of new classes on offer this year – here is a small sample. Please check our website for dates

### Kaffe Fassett: Inspiration in Colour and Design.

Frangipani Fabrics and The Stash Cupboard are hosting world renowned author; fabric and knitting pattern designer Kaffe Fassett's visit to Hobart in Feb/March 2016. Kaffe will be giving a lecture with the theme "Inspiration in Colour and Design". When: Tuesday 1st March - 6-8pm. Where: The Bahai Centre, Hobart. Cost: \$75 (includes non-alcoholic



### Gravity:

One of the most dynamic and striking quilt patterns of 2015, Gravity is designed by Julie Herman of Jaybird quilts. This quilt class will be held over nine 3 hour classes - \$25 per class – Tutor: Jess Frost.



### Improv Piecing Workshops

This year we are excited to present a series of improvisational piecing workshops. Improv is a huge part of the modern quilting movement, and it is SO much fun. As we advance through the workshops, you will become confident in 'making it up as you go along' and embracing the pure joy that is improvisational piecing. Class held over 8 3 hour classes - \$25 per class – Tutor: Jess Frost.

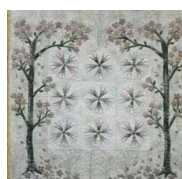


### Appliqued Curves

Applique (needle turn or machine appliqué) is becoming a technique used by a lot of modern quilters. Applique is a great technique for adding interesting shapes to your quilts without the pain of figuring out how to piece them – especially curved or circular shapes.

In this full day workshop, you will learn how to make perfect circles to appliqué onto a quilted cushion. The class sample is Jess's Molecular quilt (which was juried into the international QuiltCon quilt show in 2016), but this class will include a discussion on how to design and plan a circle-based quilt using this method. Class: One full day (6 hour) class– cost \$50.00.

### Cherry Blossom Mini Quilt



This mini quilt celebrates the beauty of the cherry blossom, an iconic Japanese symbol. This stunning quilt combines both patchwork and applique techniques to create a truly breathtaking work of art.

Techniques you will learn include: Foundation paper piecing, needle turn applique

Class cost includes pattern.

Tutor: Pip Scholten

**Come and sew those unfinished projects, or start a new project, in a friendly and relaxed environment.**

**Sewing sessions are held every Wednesday, Thursday (except public holidays), from 10am-12:30pm.**

**Tutors: Briony Alderslade, Cath Allen and Jess Frost. Cost: \$15**

**Cost: \$15**



# Quarter Inch

224 Campbell St North Hobart, Mon– Fri - 10-4, Sat 10-2 Phone: 03

## *Kona Solids are in the house!*

well, actually in the shop – and now on the [website](#)...



Helen Stubbings

Over the two weeks we've been open at Quarter Inch, every single visitor has entered the Kona room and drooled. It is a feast for the colour senses....



91 Patrick Street, Hobart, Tas 7000  
(03) 6234 2279

The Patch Works offers an extensive and varied range of patchwork fabric. Fabric for traditional patchwork quilts and fabric for contemporary quilting including many batiks and Kaffe Fassett fabrics. The PatchWorks has classes throughout the year and offers a beginner's patchwork quilt class with free tuition to get you started.





# *The Rainbow Patch*



Located at 39 Albert Road, Moonah the business opened in November 2015 after seven years of being an on-line only business.

Owner, Susan, is currently a part-time high school teacher and, with a heart for teaching, opened the store as a way to inspire and encourage those new to quilting and help them discover the fun and friendships that can be found along the way.

Specialising in children's and novelty prints from Michael Miller, Riley Blake, Timeless Treasures and others, the shop also stocks a range of batiks and blenders, EPP supplies and other surprises. It also has a growing range of stitchery designs and kits.



The store holds a weekly Friday afternoon sit and sew group where customers are welcome to bring along any project – hand or machine to work on. Monthly classes are held that will suit those new to quilting or just looking for something different. After school and school holiday classes are also available and Susan would love to hear from others interested in joining her to make charity quilts. The shop is currently open from 10 am – 4.00 pm Monday to Friday and 10am – 1 pm on Saturdays (except public holidays). When Susan is not able to be in the store, she is supported by her family who may not be as experienced with technical questions, but are guaranteed to offer a friendly welcome.

For details of the store's upcoming events, a monthly newsletter is available in store or by email. We look forward to seeing you soon.

Phone: 622 82233

Email: [susan@therainbowpatch.com.au](mailto:susan@therainbowpatch.com.au)

Facebook: The Rainbow Patch



# EASYSEW

122A ELIZABETH ST, HOBART 62345616. mail@easysew.com.au [www.easysew.com.au](http://www.easysew.com.au) [Facebook.com/Easysew](https://Facebook.com/Easysew)

Large range of Quilting fabrics, templates and accessories. Sales & Service of all brands machines and overlockers.

BIG DEMONSTRATION SALE OF MACHINES AND OVERLOCKERS

30 TO 50% OFF ALL PATCHWORK FABRIC,

Clearance on all Quilting Books -up to 50% off.

Special events : Bernina Swiss Event 9th March 10 -3.

Hands on -bring your machine any model of Bernina. (can you win a trip to Switzerland? -conditions apply)

Husqvarna Designer Epic Release with Letitia 11th March 9.30 to 12.30.

Bookings essential Hire of the Avanti Quilting machine and Frame and the Bernina Q20 & Table (to be used in store)

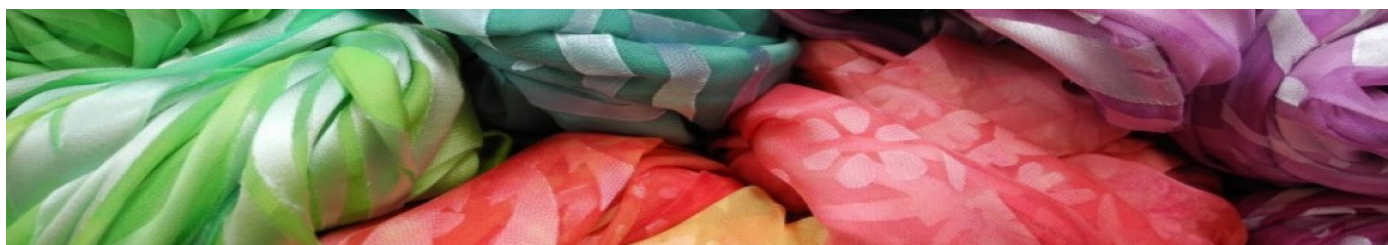


# FLOWERPOT QUILTS – Sue Domeney

**Flowerpot Quilts** is a mobile fabric store. Sue packs her car with lots of the latest fabrics, books, threads and patterns, and heads off to gatherings of quilters, at group or guild meetings. There she sets up her shop and offers her wares to quilters present. If a particular item isn't there, then Sue most probably has it back in Flowerpot and will post it to the customer. The shop/studio opening day is on Tuesdays from 10am to 4pm, and any other times by a phone call. Sue's specialty is her hand-dyed fabric, available in all colours of the rainbow, single and multicolour, sizing from fat quarter to metres.

Sue Domeney  
– quilts to dye for  
way, Flowerpot 7163  
email: [dombros2@bigpond.com](mailto:dombros2@bigpond.com)

Flowerpot Quilts  
3947 Channel High-  
Phone 0438 674 900



## TASMANIAN QUILTING GUILD

### MINUTES OF GENERAL MEETING

Held at the Punchbowl Christian Centre, 5 December, 2015

Meeting commenced at 10:45 a.m.

**PRESENT:** As noted in sign in book.

**APOLOGIES:** As noted in sign in book plus Myrna McHugh, Kerry Black, Judi Spurr, Helen Lutz, Christine Bean, Lorraine Wootton, Rach Denholm

**WELCOME:** Alison Howlett, President, welcomed traders and visitor, Bev Thwaites

#### **CONFIRMATION OF MINUTES:**

Moved Pam Stewart, Seconded by Barbara Mellor, that the minutes of the meeting held on 19 September and published in the November edition of Island Threads be accepted as a true record. Carried.

#### **BUSINESS ARISING FROM MINUTES:**

Ongoing issues with Expertise Events – further discussion to be deferred until General Business. The position of Northern Rep was left vacant after the AGM in September. Since then Karyn Leary has been nominated by Leonie Champ, seconded by Dianne Lockhart, and has agreed to accept this position. The meeting was asked to ratify her appointment. Carried.

#### **CORRESPONDENCE IN:**

##### **Newsletters:**

Common Thread	Geelong Patchwork & Quilters – October and November issues
The Quilters Patch	The Australian Quilters Assoc Inc – November and December issue
Newsletter	Waverley Patchworkers – November issue
The Template	The Quilters' Guild of NSW Inc – November issue
Material Facts	Queensland Quilters Inc – December issue

##### **Letters and other mail received:**

Australian Patchwork & Quilting – Vol 25 No. 7 – featuring a review of Island Quilts

Down Under Quilts – Issue 173 - featuring a review of Island Quilts

Down Under Textiles – Issue 19 – came with Down Under Quilts

30 September, 2015 Expertise Events – email from Gary Fitz-Roy advising that they would commence legal action if account not paid by 2 October.

30 September, 2015 Shields Heritage – email attaching a draft letter to Expertise Events for approval

1 October, 2015 Shields Heritage – email attaching copy of reply to Expertise Events

16 October, 2015 Shields Heritage – email attaching copy of reply from Expertise Events and response

21 October, 2015 Shields Heritage – email attaching copy of reply from Expertise Events and response

28 October, 2015 Shields Heritage – email attaching copy of further letter to Expertise Events

30 October, 2015 Shields Heritage – email attaching copy of email from Expertise Events and reply

4 November, 2015 Shields Heritage – letter advising us to pay \$272.82 to Expertise Events

26 November, 2015 Shields Heritage – letter advising matter closed and enclosing account

5 November, 2015 Hobart City Council – our letter passed to appropriate department

7 November, 2015 Sandra Champion – card thanking committee of TAQP

7 November, 2015 Sandra Champion – card thanking TQG for supporting TAQP

8 November, 2015 Sandra Champion – email recommending The Long Gallery and our reply

6 – 10 November Supportive emails in response to committee's email to all members

12 November, 2015 Di Mitchell – email thanking us for flowers

27 November, 2015 Cindy Watkins – email forwarding advice from Expertise Events that they would be holding a quilt show in Hobart in February, 2017

1 December, 2015 Expertise Events – email from Judy Newman re her conversation with our President

1 December, 2015 Anne Ford – email advising sale of fabric through Facebook

## MINUTES OF GENERAL MEETING

### **CORRESPONDENCE OUT:**

1 October, 2015	Shields Heritage – email advising approval of their reply to Expertise Events
16 October, 2015	Shields Heritage – email advising approval of their letter to Expertise Events
4 November, 2015	Shields Heritage – email advising payment of requested \$272.85 for Expertise Events
27 October, 2015	Hobart City Council – request to waive fees for hire of City Hall
6 November, 2015	Email to all members updating them on situation with Expertise Events
1 December, 2015	Hobart City Council – email to Mark Smith giving him requested information regarding proposal to hire City Hall for quilt exhibition.

Proposed by Sherrie Jewson, seconded by Fran Williams, that the correspondence be accepted as listed. Carried.

### **REPORTS:**

#### **President** (Summary) Alison Howlett

Another very interesting three months since the September meeting. The quilt exhibition held by Launceston Patchworkers & Quilters was wonderful and well attended. Congratulations to all those who worked so hard to put on this exhibition. I also attended the opening of the Tasmanian Art Quilt Prize and this was also wonderful. Again, our congratulations to all those involved, especially the sponsors. There have been ongoing issues with Expertise Events and it would appear that information is being “leaked” back to Expertise Events by one or more of our members. This is not helpful and undermines what the Committee of Management is trying to do. We need to know that the members are behind us and support the actions we have taken. (Report interrupted by an ovation from the floor). The matter of the dispute with Expertise Events will be fully discussed in General Business.

ACQ will be held in Hobart in February – if anyone wants to attend this conference and listen to the matters discussed, please contact one of the committee to make arrangements as numbers are limited and each member attending has to be recorded.

Sadly, we have heard that Di Mitchell is very unwell and flowers and a card have been sent to her.

The announcement of the Quilter of the Year was then made and this was awarded to Chris Coulbeck-McMurray. Chris was awarded a framed certificate recording her achievement as well as flowers and wine.

#### **Treasurer** (Susan Holdcroft)

Current assets:	CBA Account No. 28064101	\$13,554.01
	CBA Account No. 10733963	\$ 3,971.69
	CBA Term Deposit	<u>\$10,419.56</u>
Total assets:		<u>\$27,945.26</u>

Only one new member has joined since the last meeting. Wendy is holding many receipts for membership subscriptions paid so if anyone wants to collect their receipt please do so.

#### **Retreats** (Zoe Johns)

Several applications have been received but at this stage it is not certain whether there will be one or two retreats. Still waiting to hear from a couple of members who normally attend.

#### **Workshops** (Cindy Watkins)

Cindy Watkins has just taken over role of Workshop Convenor – every table at today’s meeting has had a sheet left on it and Cindy would like suggestions of names of tutors that members would like to run workshops in Tasmania. Some favourite tutors from the US are already booked until 2018. Grants are available to help with the costs of bringing tutors to Australia and if we can decide on some names, Cindy will apply for the necessary grants. Any feedback from members would be very useful.

#### **Newsletter** (Wendy Townsend)

The next newsletter is due to go out early February and the valuation form will definitely be in that issue – both sheets. It was missed from the last newsletter. Any items to be included must be in hand by end of January and any contributions will be gratefully received.

Pam Stewart asked when the next newsletter would be posted out and was advised that this would be in the first week of February. Jenny Croxton asked what format should be used to send photos and was advised that email would be best and Photoshop can be used to crop and/or enhance them. Karen Stagg asked that the perpetual calendar be reinstated in the newsletter.



## MINUTES OF GENERAL MEETING

### **Island Quilts** (no convenor)

As there is currently no convenor for Island Quilts there was no report.

### **AREA REPORTS:**

#### **South (Jenny Croxton)**

Channel Quilters has had their Christmas lunch and will be celebrating twenty years next year. Come Quilting also has a Christmas lunch this week and their challenge is called "Circles". Kensington Quilters welcomed several new members who are new to quilting and will also have a Christmas lunch at Ouse. Katherine Jones has an exhibition of her work at The Patchworks which was opened on 2 December and includes quilts from her first one made in 2009 up to those made recently. The exhibition will run until 19 December. Care Quilts has continued and the total number of quilts is now in excess of 200. The plans for the Easter Showcase are under way and this will be held on 19 March and Pam Stewart has set up a Facebook page.

#### **North West (Janine Richardson)**

Many little quilts of love have been donated by Lesley Lyons from Devon Quilters. These will be distributed next year to local hospitals. Wynyard Cottage Quilters will hold their Christmas lunch on 12 December and the 30<sup>th</sup> Anniversary "Roosting Robins" quilts will be displayed. Also the 2015 challenge quilts using a challenge fabric will be displayed and judged. The "30 Something" or "Pearl" quilts have been displayed in local quilt shop, The Fabric Parcel. Meetings will be starting up again in January, 2016, with a dinner at the home of one of the members, Linda Stillman. Leven Quilters enjoyed a three day retreat at Nindethana. Of course, there was plenty of food, stitching and chatter. Christmas lunch will be held on 21 December and meetings will start again early in January. Janine thanked the Guild for the condolence card sent to her following the passing of her mother. Janine also said that she will endeavor to visit some of the local groups next year.

#### **North (Karyn Leary)**

Fran Williams advised that the Bridport Textile Group will be holding an exhibition from 27 December to 3 January from 10 a.m. to 3 p.m. daily. There will also be demonstrations daily and traders and craft stalls as well.

### **SUB-COMMITTEES**

#### **Tasmanian Art Quilt Prize** (Barbara Mellor)

Unfortunately, the timing was not right to get photos in the latest issue of Island Threads but the November issue of "Narryna News" featured an article about the Tasmanian Art Quilt Prize with several photos of members who attended as well as the prize winners and the Governor of Tasmania. Narryna extended the exhibition by one week. First prize was won by Katherine Jones and Sandra Champion was runner up. Commendations were awarded to Helen Godden (ACT) and Laraine Pickett (NSW). The committee was very happy with the judging and also very happy with the standard of the work. There were seventeen finalists who came from all over Australia. Cards have been printed which show photos of either this year's winner or the winner of the TAQP in 2013. Barbara has been using these as Christmas cards for some of her overseas friends – they are for sale for \$3.00 each. There is also a raffle which will be drawn later today – tickets are available at \$2.00 each.

At this point in time, there is about \$600.00 left in the budget plus any money from raffle tickets sold today and there is also \$400.00 in sponsorship money still to come from Spotlight. A more detailed report will be made to the Committee of Management but one of the major items which helped the budget was the fact that accommodation was provided free of charge for Gloria Loughman, the interstate judge and also, Stitching & Beyond organised a workshop with Gloria while she was here and so could claim the travel subsidy from the Guild to cover her air fare. Quilts entered by Guild members will be displayed at the March meeting, they will also be displayed at Wonders of Wynyard and Expertise Events has been approached to see if they want the quilts to exhibit at AQC. The Bay of Fires Festival will be held in the June long weekend next year and the quilts will be on display in one of the galleries – they will then go to Gone Rustic and then possibly to Island Quilts. Last time Victorian Quilters had the TAQP quilts at their quilt show and it is possible that this will happen again.

The Gloria Loughman workshop was fantastic and the committee is very grateful to Chris Hussey and Stitching & Beyond for organizing this.

#### **Valuation Committee** (summary from minutes of last meeting)

The valuation form in newsletter is still not correct and members have been unable to download it from the website. Wendy Townsend is to be contacted to ask to fix these problems. Valuation days in 2016 will be 2 April and 15 October or 24 September. Sharon Thomson would like someone else to take over as Administrator as she has been doing it for ten years and Beryl Cross brought up the matter of valuers missing meetings. Marlene Boatwright judged quilts at the Launceston show in October and said there were some lovely entries.

### **TRADERS:**

Judy Duckett from Bagdad Quilts, Sarah Fraser from Patchwork Plus, Yvette Gilligan from Make on Longford, Cindy Watkins from Elemental Art Space, Michelle and Julie from The Fabric Parcel, Ann Alderslade from Frangipani Fabrics, Pam Jarman from Quilt Top Quilting and Sue Domeney from Flowerpot Quilts all wished everyone a happy and safe Christmas. Yvette Gilligan advised that Make on Longford would be closing down before Christmas as the three partners in the business had decided to retire.

## MINUTES OF GENERAL MEETING

### **GENERAL BUSINESS**

Margaret Treloar, Secretary, gave a brief outline of events since the last general meeting in September. As can be seen from the list of correspondence there were several letters from the solicitors we hired, Shields Heritage, to Expertise Events and several emailed replies.

Even though Gary Fitz-Roy (Managing Director of Expertise Events) claims that the committee of the Guild did not seek to resolve the matter before taking legal action this is definitely not correct and several emails and telephone calls preceded the first letter from the solicitors. Gary's initial reaction was to say that he would take action against the individual members of the committee to recover his funds but someone must have told him that he could not do this because he did not pursue this option. It seemed that Gary did not actually read the letters sent by the solicitors because his replies did not address the points raised by them nor did he provide the information that was requested by the solicitors. However, his constant refusal to address the issues raised meant that the solicitors had to keep writing to him to try to resolve the matter and, of course, this increased our costs. Expertise Events claims that we did not have a contract only an agreement but, as we all know, they are actually one and the same thing. The original amount requested by Expertise Events was in excess of \$4,500.00 and it cost us \$1,287.00 in legal fees plus we paid Expertise Events the sum of \$272.85 so we are \$3,000.00 better off than if we had paid the amount requested. Later in the negotiations we were offered a discount of \$1,000.00 off the original amount but even with this, we would have been \$2,000.00 worse off if we had agreed to pay.

Alison Howlett then said that she felt that in all conscience, she could not sign another agreement with Expertise Events on behalf of the Guild unless that agreement/contract was assessed by a solicitor. In her last telephone call Judy Newman (wife of Gary Fitz-Roy and Craft Consultant for Expertise Events) indicated that Expertise Events may consider entering into another agreement with the Guild but Alison felt that as the terms of the previous agreement were so blatantly changed when it suited Expertise Events to do so, there would be nothing to stop them doing this again so we would need to ensure that any future agreement was watertight and we had full protection from such changes. Judy Newman advised that if we took legal advice on any potential agreement then Expertise Events would not proceed.

The COM feels that there is no option but to run Island Quilts ourselves without the "assistance" of Expertise Events. If Expertise Events are to run a Quilt and Craft Fair in Hobart in February, 2017, then the big question is where will they be getting the quilt part of the fair from?

Alison went on to ask members to refrain from sending any information to Expertise Events and said that the COM would like members to endorse their actions to date. There was an immediate round of applause and a motion was proposed by Pam Jarman that the members present fully supported the actions of the COM. This was seconded by Sherrie Jewson and passed unanimously (with a further round of applause).

There followed general discussion regarding the holding of Island Quilts in 2016 and the following points were made:

Pam Jarman said that the feedback after the last quilt show at the Silverdome was that visitors were very disappointed with the number and quality of traders. One woman told her that she had been to the Silverdome, seen the quilts and was shopping at Make On Longford by just after 11 a.m.

Ann Alderslade said that she had lived in the Northern Territory for many years and Darwin and Alice Springs have always run their own quilt shows very successfully.

Cindy Watkins said that the prices charged by Expertise Events for their traders' spaces are unbelievably expensive, the cost just does not make it worthwhile to go. She said that the main drawback is the quilt exhibition, not the traders.

Kathy Mumford asked if we ran the show ourselves would Bernina still sponsor us and bring the Best of Australia Quilts to Tasmania. Alison assured her that Greg Alexander had confirmed that Bernina would continue to sponsor the Guild as long as we put on a quality, professional exhibition.

Beryl Cross said that other states would be happy to send their challenge quilts for display as they have done in the past. Whatever we decide to do, it should be done differently to the exhibitions sponsored by Expertise Events. The quilt show should be ours. She went on to say "well done" to the committee and this was followed by another round of applause.

Pam Jarman said that this change could be a very good thing.

Alison Howlett said that we will need as many people as possible to help. At this stage we think that Island Quilts will be held in Hobart in September/October, 2016, and we are currently researching venues. We will keep the members informed of what is happening and if anyone has ideas or suggestions or can help in any way, please contact a member of the committee.

## MINUTES OF GENERAL MEETING

### **Australian Council of Quilters**

Plans for the conference to be held in Hobart in February, 2016, are well under way. The Travelodge at Hobart Airport has been booked and most of the delegates from the mainland have made their bookings for accommodation. Wendy Townsend has made pockets featuring the logo of the Guild and these will be attached to the front of calico gift bags which will be given to the delegates. Lavender bags have been made up to go in the bags, luggage tags are currently being worked on and contact has been made with various suppliers to try and get sample size gifts to put in the bags. One honey producer who was asked advised that there is a worldwide shortage of honey at the moment but did offer to supply 50 gram pots of honey at \$3.00 each. Karen Stagg advised that she could help with this and would speak to the committee later.

Alison Howlett said that if anyone wanted to come along and listen to the speakers at the conference that they should contact a member of the committee to let us know as they would have to be booked in, they could not just turn up on the day.

Barbara Mellor asked if there was a conference speaker organised for the night of the dinner and Alison advised that she had spoken to Helen Stubbings of the Modern Quilt Guild and was hoping that Katherine Jones would also be able to show some of her work.

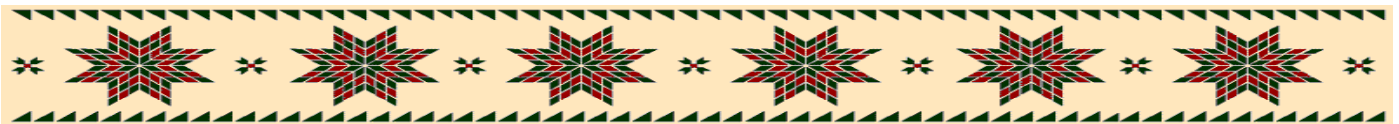
### **Charity Proposal for Mellwood Palliative Care Unit**

Kathy Mumford outlined a proposal to provide fifteen quilts of hospital twin mattress size to the Mellwood Palliative Care Unit in St Luke's Hospital, Launceston. Most of the fabric could be provided from the stash left by Tiny Kennedy, the designs should be unisex, graphic block patterns and be colourful. A planning session will be held in mid April, 2016, and monthly sewing days will be held around the state. It is hoped that at least several of the quilts will be complete by the next Island Quilts Exhibition and quilts will be displayed at general meetings as they are finished. Kathy has a draft label for these quilts which includes "Tiny Kennedy Memorial Quilts for Mellwood Palliative Care Unit". Any member or affiliated group who is interested in participating should contact Kathy for further information.

### **Art Quilt Retreat**

Sherrie Jewson asked if there were any members who would be interested in attending a retreat especially for quilters wanting to do art quilts. She said that she would be happy to work with those on the retreat to help them if they were not experienced in the making of art quilts. Anyone interested should contact Sherrie to discuss.

The meeting closed at 12.15 p.m.



## *Winner of the Rotary Textile Challenge at the*

## *Deloraine Craft Fair*



Winner of the Rotary Textile Challenge pictured here with Kerrie Hay was Cindy Watkins with her amazing 'Silver Wattles at the Forest Edge' quilt above to the left of Cindy. Cindy is now the proud owner of a Bernina 350PE



Narelle Grieve arranged the first meeting of all the quilting Guilds in Australia in 1992. This led to the formation of the Australian Council of Quilters. Representatives from each State guild meet annually for a two day conference to discuss common issues such as valuation, judging, sponsorship, awards, exhibition categories and professional and amateur status. These conferences are held in a different State each year with the host State organizing the event.

2016 is Tasmania's chance to shine as we will be hosting at the Airport Travelodge in February 2016

Plans for the conference to be held in Hobart in February, 2016, are well under way. The Travelodge at Hobart Airport has been booked and most of the delegates from the mainland have made their bookings for accommodation. Wendy Townsend has made pockets featuring the logo of the Guild and these will be attached to the front of calico gift bags which will be given to the delegates. Lavender bags have been made up to go in the bags, luggage tags are currently being worked on and contact has been made with various suppliers to try and get sample size gifts to put in the bags. One honey producer who was asked advised that there is a worldwide shortage of honey at the moment but did offer to supply 50 gram pots of honey at \$3.00 each. Karen Stagg advised that she could help with this and would speak to the committee later.

Alison Howlett said that if anyone wanted to come along and listen to the speakers at the conference that they should contact a member of the committee to let us know as they would have to be booked in, they could not just turn up on the day.

Barbara Mellor asked if there was a conference speaker organised for the night of the dinner and Alison advised that she had spoken to Helen Stubbings of the Modern Quilt Guild and was hoping that Katherine Jones would also be able to show some of her work.





# *Affiliated Groups*

## NORTH

**Dorset County Quilters** - meet on the third Wednesday of each month at the Uniting Church Hall, King Street, Scottsdale from 9.00am to 4.00pm.

Contact : Jenny Millwood (03) 6356 0181.

**George Town Wilted Quilters** - meet on alternate weeks on Monday evenings from 7.00pm at the Old Courtroom (Quilters' Quarters) at the George Town Council Chambers.

Contact : Carla Coogan (03) 6382 1154.

**In Stitches** - Tresca in Exeter Wednesday mornings 9 -1 and Tuesday Evening 7-9

**Launceston Patchworkers & Quilters** - meet at the Punchbowl Bible Chapel, 100 Punchbowl Rd, Launceston, every Thursday from 10.00am to 2.00pm and the second Saturday of the month from 11.00am to 4.00pm.

Contact : Fran Williams (03) 6331 9498.

**Meander Valley Quilts** - meet fortnightly at Elemental Artspace, 3 Emu Bay Rd, Deloraine from 1.30 - 3.30 pm.

Bring your current project to work on.

Contact: Cindy Watkins 0437 057 417

**Lilydale Moderns** Meets the first and third Monday of each month from 10am at Whites Mill Road Lilydale.

Call Rach Denholm on 0427951498 if interested

## NORTH-WEST

**Burnie Piecemakers** - meet on the first and third Monday of the month (except public holidays) at the Baptist Church Hall, 57 Mount Street, Burnie from 10.00 am. Contact: Lynn Hoodless (03) 6431 7596 .

**Devon Patchworkers & Quilters** - meet at the Devonport Library, Fenton Street, Devonport each Wednesday from 1.00 pm - 4.00 pm and each Thursday evening from 7.00 to 9.00 pm.

Contact : Vonda Jeffrey (03) 6424 4632.

**Leven Quilters** - meet every Monday at the Catholic Church Hall, Alexandra Rd, Ulverstone from 10.00am to 3.00pm.

Contact : Janine Richardson, (03) 6431 6299.

**Material Girls** - meet every Wednesday at the Supper Rooms of the Memorial Hall, Gilbert St, Latrobe from 10.00am to 4.00pm.

Contact: Susan Travers 0408 380 439

**Penguin Village Stitchers** - meet every Tuesday 10am to 2pm at the Baptist Church Hall, Ironcliffe Road, Penguin.

Contact: Rosemary Barrenger, (03) 6442 2169.

**Platypus Patchers** - meet every Tuesday morning 10am to 12noon at the Latrobe Recreation Centre, Cotton Street, Latrobe.

Contact: Margo Barber (03) 6496 1156

**Queenstown Quilting and Craft** - meet every Tuesday morning 10am to 12 noon at the Galley Museum in Driffield Street, Queenstown.

Contact: Iris Beams (03) 6471 2043

# *Affiliated Groups*

**Smithton Town & Country Patchworkers & Quilters** - meet every second Saturday of the month at the Smithton Christian Fellowship Building in Nelson St, Smithton, from 10.30am to 4.00pm.

Contact : Cathy Parsons 0409 522 006

**Wynyard Cottage Patchworker & Quilting Group** - meet in members' homes on the fourth Tuesday evening at 7.00pm and the first and third Monday of the month at 11 am.

Contact : Helen Dixon, (03) 6442 3181

## **EAST COAST**

**Break O'Day Stitchers** - meet every Friday at the St Helens Neighbourhood House Bungalow, St Helens, from 10.00am to 3.00pm. General meetings held on the last Friday of the month 10.00am for about an hour.

Contact : Ann Luttrell - mluttrell2@bigpond.com

**Which Stitches**- meet at Sufi's of Triabunna on the first and third Mondays, from 7-9 pm, for a pleasant conversation, sewing and coffee and supper.

Contact : Pat Bell

## **SOUTH**

**Aberdell Haven Quilters** - meet Wednesdays 10-4 and Fridays from 4-10pm, in Acton Park area; limited spaces for machine and hand sewing

Contact: Judi Spurr (03) 6248 1100

**Channel Quilters** - meet alternate Tuesdays in members' homes from 10.30am to 3.00pm

Contact: Lauree Brown

**Claremont Quilters** - meet every Wednesday from 10-3, at Claremont RSL, 9 Bilton Rd, Claremont. New members welcome.

Contact: Karren Walker 0409 471 112

**Come Quilting Loose Threads** - meet each Wednesday morning 9.30am to 12 noon, in the hall under St Francis Xavier Church Hall, cnr Adelaide & Anglesea Sts, South Hobart.

Contact: Shirley Gillam (03) 6223 4835

**Crazy Quilters**—Meet Monday nights 7-9.30 1 Cherry Court Forcett Contact Wendy Townsend 0422 274 279

**Kensington Quilters** (formerly St Anne's Quilting Group) meet at the Uniting Church Hall, Kensington St, Glenorchy, each Wednesday from 9.30am to 12 noon, and on last Wednesday of the month at 9.30 to 2pm.

Contact: Janice Daley (03) 6272 9343.

**Quilt Inn** - meet fortnightly in members' homes. This a closed group with a waiting list.

**Quilting Companions** New Norfolk New Members Welcome

Contact: Jenny (03) 6261 3795, 0400 166 542

**Scattered Pieces** - meet last Saturday of the month from 12.30 to 4.00pm at Corpus Christie Church, Alma Street, Bellerive.

Contact : Lisa Rose (03) 6273 9933

## *Affiliated Groups*

**Sippers and Sew-Hers** - meet every Tuesday, from 10 am - 4 pm

Contact: Caroline Wells (03) 6254 7133

**Sommers Bay Quilters** - meet on the second and fourth Saturdays of the month

at 623 Sommers Bay Rd, Murdunna at 1.30pm.

Contact : Margaret Pendlebury (03) 6253 5609

**Stitching and Beyond** - meet on the third Monday of the month at the Adult Education Centre, Hutchins Street, Kingston from 10.00am to late lunch, and on the first Thursday of the month at The Friends School, Argyle Street, North Hobart, from 6.00 to 8.00pm.

Contact : Faye Twining (03) 6272 0531

**Tasmanian Modern Quilt Guild** - meet on 1st Wednesday of month at the New Town Bay Rowing Club from 6-8 pm. Meeting cost \$5; Membership \$35 + \$10 joining fee.

Contact: tassiemqp@gmail.com; facebook.com/tasmanianmqg; instagram.com/tasmqg;  
blog tasmanianmodernquiltguild.blogspot.com

**Willow Court Quilters** - meet every Monday, from 10 am - 3 pm, at the Patchwork Cafe, 15 George Street, New Norfolk. New members welcome

Contact: Janine 03 6261 5730, 0417 916 479



## *TASMANIAN STORES*

### NORTH

#### Launceston

##### **Esme's**

Shop 1, 216 Charles St. Launceston, Tas 7250 Phone : 03 6334 9775 Open: 10.00 am – 4.00 pm Monday – Friday  
10.00 am – 1.00 pm Saturday

website: [www.esmes.com.au](http://www.esmes.com.au) email: [lil.a@bigpond.net.au](mailto:lil.a@bigpond.net.au) Patchwork and Quilting, Haberdashery, Needlecraft..

##### **Purrfectly Quilted (Jane Monk)**

P.O. Box 5, Legana Tas 7277 Phone: (03) 6330 2515 Open: anytime by appointment web:

[www.purrfectlyquilted.com.au](http://www.purrfectlyquilted.com.au) email: [jmonk@bigpond.net.au](mailto:jmonk@bigpond.net.au)

Long Arm Machine Quilting service.

##### **Sewknit**

Shop 29, York Town Square Launceston, Tasmania 7250 Phone: (03) 6331 3266 Fax: (03) 6331 7177 (phone/fax)

Open: 9:00am – 5:30pm Monday – Friday 9:00am – 2.00pm Saturday email: [sewknit@bigpond.net.au](mailto:sewknit@bigpond.net.au) Sewing machines, fabrics and sewing essentials

**Patchwork Plus** 14 Anne Street, Georgetown, 7253, PH: 03 63823999 Open Tuesday-Friday 9.30am until 4.30pm. Saturday 9.30am – 2pm <http://patchworkplus.com.au/>

# TASMANIAN STORES

## Burnie

**Quilt Top Quilting** (Pam Jarman) 12 Cranwell Street, (P.O. Box 808) Burnie, Tasmania 7320 Phone: (03) 6431 3650

Open: by appointment

Longarm Quilting Service

## Deloraine

**Elemental Artspace** 3 Emu Bay Road, Deloraine Tas 7304 Phone: 0437 057 417 Open: 9.00am – 5.00pm Daily  
(Closed Christmas Day)

website: [www.elementalartspace.com](http://www.elementalartspace.com) email: [deepeacestudio@yahoo.com.au](mailto:deepeacestudio@yahoo.com.au)

Wide range of quilting fabrics, haberdashery, art quilt and dyeing supplies. Classes and workshops.

## Ulverstone

**Cranberry Crafts** 71 Reibey St Ulverstone, Tasmania 7315 Phone: (03) 6425 1077 Fax: (03) 6425 6939 Open:  
9:30am – 5pm Tuesday – Friday

10am – 2pm Saturday Closed Sunday, Monday & public holidays website: [www.cranberrycrafts.com.au](http://www.cranberrycrafts.com.au)

email: [info@cranberrycrafts.com.au](mailto:info@cranberrycrafts.com.au) quilting supplies

## EAST-COAST

### Triabunna

**Sufi's Craftshop** 26 Vicary St, Triabunna, Tas 7190 Phone: (03) 6257 3212 Open: 10:00am – 4:00pm daily website:  
[www.sufiscraft.com](http://www.sufiscraft.com) email: [pat@sufiscraft.com](mailto:pat@sufiscraft.com)

## SOUTH

### Hobart

**Frangipani Fabrics** 78 Queen Street, Sandy Bay, Tasmania, 7005 Phone: (03) 6224 0244 Open: 9.30am – 5.30pm  
Mon to Fri 9.30am – 4.00pm Sat website: [www.franfab.com.au](http://www.franfab.com.au) email: [franfab@octa4.net.au](mailto:franfab@octa4.net.au) Fabrics, books (including  
a lending library), haberdashery & classes. Mail orders welcome.

**Easy Sew and Possum Patch** 122A Elizabeth St, Hobart, Tasmania 7000 Phone & Fax: (03) 6234 5616 Open:  
9.00am – 5:30pm Monday – Friday 9:30am – 3.00pm Saturday website: [www.easysew.com.au](http://www.easysew.com.au) email:  
[mail@easysew.com.au](mailto:mail@easysew.com.au) On Facebook as Easysew Sewing machines, fabrics & sewing essentials

**The Patch Works** 91 Patrick St, Hobart, Tasmania 7000 Phone: (03) 6234 2279 Open: 10.00am – 4.00pm  
Wednesday to Friday 10.00am – 2.00pm Saturday website: [www.thepatchworks.com.au](http://www.thepatchworks.com.au) email: [enquiry@thepatchworks.com.au](mailto:enquiry@thepatchworks.com.au) Fabrics, classes & quilting supplies

### Huonville

**Craftwise (Julie Ruscoe)** PO Box 442, Huonville, Tasmania 7109 Phone: 0448 838 655 website:  
[www.craftwise.com.au](http://www.craftwise.com.au) email: [admin@craftwise.com.au](mailto:admin@craftwise.com.au) Quilting, craft & sewing supplies. Internet and mail order only

### Kingston & Channel

**artbeat of Tasmania** 2/16 Mertonvale Circuit, Mertonvale Kingston, Tasmania 7050 Phone: 6229 3800 website:  
[www.artbeattas.com.au](http://www.artbeattas.com.au) email: [artbeatoftasmania@bigpond.com](mailto:artbeatoftasmania@bigpond.com) Art, craft & quilting supplies.

### Flowerpot Quilts

3947 Channel Highway, Flowerpot, Tasmania 7163 Phone: 0438 674 900 Open Tues 10am to 4pm, other times by  
appointment website: [www.quiltstodyefor.com.au](http://www.quiltstodyefor.com.au) email: [sue@quiltstodyefor.com.au](mailto:sue@quiltstodyefor.com.au)

Hand-dyed fabrics, other fabrics



# Valuation Report.

We had our last valuation day for the year. 13 quilts valued. Tentative dates for next year are April 2nd and October 15th.

Please consider having your quilts valued.

Marlene Boatwright

## How will my quilt be valued?

When a quilt is valued by the Guild, we follow the methods used by some of the larger inter-state Guilds. There are four qualified valuers involved; three will value the quilt and the fourth will act as scribe.

The quilt is held up in order to assess the visual impact. It is then laid out on a table, measurements are checked and the quilt examined in detail. Each valuer has a score sheet which consists of two sections, firstly the quilt as a whole covering general appearance, design, colour and overall effect. The second section is workmanship which reviews accuracy of the piecing, evenness of quilting stitches etc. Each section has a sub-division to which points have been allocated, and each valuer works independently and scores each sub-division. Upon completion, the valuer totals the scores she has given in each sub-division and this results in a total score out of 100. The three valuer's scores are added together and averaged. There is a Chart which gives a Scale value for each percentage point. The value, is applied to the square meterage of the quilt. This method takes into account the size of the quilt so a large quilt will have a greater value than a small quilt with the same average percentage.

The valuers do not sit around, have a discussion and come up with a value. They go through a prescribed procedure and the value is calculated from an independent scale. The valuation process is an attempt to apply an objective methodology to what can be, a very subjective thing.

The valuers are unaware of the actual cost of commercial quilting, patterns, materials etc. They assess the durability and quality of the materials used for the purpose intended and score appropriately. Design and the quality of quilting are assessed based on the actual result, not the cost of achieving that result.

(Article by Chris Coulbeck-McMurray)

## What the Valuers look for

When valuing a quilt, the Valuation Committee uses a point system. An average of the points allocated by all valuers are given a figure in dollars according to a scale. This figure is multiplied by the square measurement of the quilt to give the valuation of the quilt.

All aspects of the quilt are carefully considered under the headings of:

General Appearance

Workmanship

Design, colour, quilting pattern and/or originality

Piecing and/or applique

Elements of design

Hand quilting or machine quilting techniques

Choice and use of colour

Precision and finishing of binding and edges

Choice and use of quilting design

Presentation

Originality of design or use of traditional design

Fabric choice

# Valuation report.

These headings cover many questions relating to the design and workmanship of the quilt. Each are allocated a number of points, which give a percentage. As each valuer (no less than three for each valuation) will allocate a different percentage, the totals are all added together and an average taken.

Points that Valuers look for include the following:

- Are the opposite sides of the quilt equal in length?
- Is the binding applied evenly and stitched invisibly?
- Do the points of triangles meet precisely without the tips of the triangles being nipped off?
- Do fabrics and colours compliment each other?
- Does the quilting design compliment the quilt?
- Is there embroidery or other embellishment featured?



## Australian Machine Quilting Festival & Show 2016.

Adelaide is hosting the biennial Aust. Machine Quilting Festival & Show again this year, to be held from 25<sup>th</sup> to 28<sup>th</sup> August. This fabulous festival covers all aspects of quilting & has international quilters from U.S.A., Canada & Germany including Bethanne Nemesh, as well as Australia's top quilters all conducting classes. There is an extensive vendor mall, with machines, fabrics and all things quilting on display too. The beautiful riverside location at the Convention Centre is central and there are numerous accommodation deals available to AMQF attendees.

The Australian Machine Quilting Association also has its bi-annual Show in conjunction with the festival. This year, the judging panel comprises Australian and International judges and for a small fee, you can even have your quilt critiqued by the judges. What a unique opportunity! The numerous categories cater for all styles & abilities of quilting, even an Edge to Edge category, ideal for those quilters with a long arm machine, who are not into custom or art work. There are great prizes too!

So members, if you can't make the show, how about submitting an entry into the Quilt Show. Even if you don't win, it's a great experience and you can have your quilt critiqued as well. Entry is \$10 per quilt for members, or \$20 for non-members and entries must be postmarked no later than 1<sup>st</sup> July. For details of the Festival see [www.amqfestival.com.au](http://www.amqfestival.com.au), for details on the Show & entry forms go to [www.amqa.com.au](http://www.amqa.com.au).



# TASMANIAN QUILTING GUILD INC.

## APPLICATION FOR QUILT VALUATION

Quilt maker/s:.....

Address:.....

Phone No:..... Email:.....

Quilt owner/owner to be (if other than quilt maker):..... (Valuation certificate will be issued in the name of the quilt owner for insurance purposes)

Address:.....

Quilt Title:..... Year completed.....

Quilt description (Please tick appropriate box):

Bed quilt ☐

Wall hanging ☐

Art quilt ☐

Colour scheme:.....

Brief description of quilt (e.g. blocks used/layout/medallion/landscape/borders etc) (This description is for the certificate)

.....  
 .....  
 .....

Design Source: Original Design ☐ Traditional ☐ Traditional variation ☐

Other sources, please specify, e.g. book, magazine, workshop, class, etc.:

.....

Publication (Name & Date):.....

Construction method:

Hand pieced

Machine pieced

Tied

Hand appliqued

Machine appliqued

Hand quilted

Machine quilted

Quilted commercially on quilting machine by:.....

Other method, please specify:.....

Materials used (type of fabrics, embellishments etc.):.....

.....

(...Page 1 of 2)

**Batting or Wadding used:**.....

**Other information relevant to valuation:**.....

.....

**Why do you want your quilt valued?**

Insurance value ☐

If this quilt is being valued for reasons other than insurance please state purpose below

.....

Please supply **ONE** photograph of your quilt **by email** to the Valuation Administrator (our Administrator is now storing everything on computer). If you are not on email or do not have online access, please send **ONE** photograph with your application.

**Please label the photo with this information: quilt title, size, maker's name, year completed.**

**The application must be received 2 weeks prior to the advertised Valuation Day.**

**Valuation fee:** Members \$10 Non members \$20

(A surcharge of \$10 per quilt will be charged to anyone who requires a quilt to be valued outside our valuation days.)

A time will be arranged for valuation of your quilt, and a Valuation Certificate will be issued for insurance purposes.

**Acknowledgement of receipt of this application, and notification of the time and place of valuation, will be sent by text message to mobile phone number , email address, or phone call to home address.**

## CONDITIONS

*While every care will be taken, the Tasmanian Quilting Guild Inc or the assessors cannot be held responsible for loss or damage while the quilts are in the process of being valued.*

*Quilt owners are responsible for arranging delivery of their quilts to the place of valuation.*

*Quilt owners will bear the cost of Priority, certified postage, reply paid, and insurance to and from the Valuers.*

*Please include the cost of return priority, certified postage and insurance with your Application, otherwise return is C.O.D.*

**I have read, understand and agree to the above conditions**

**I enclose my cheque/money order, for \$ ..... made payable to the Tasmanian Quilting Guild Inc for the Valuation Fee.**

**OR :**

# Exhibition convenor report

## Mission statement IQ 2016

To foster the aims of the Guild by

- presenting a wonderful show with lots of stunning quilts
- attracting a wide demographic of viewers
- working with businesses to add retail excitement
- involving members and groups and businesses from all over our state
- building goodwill in the community towards the Guild

I have recently come on board as exhibition convenor for ISLAND QUILTS which will be held at the Showgrounds in Hobart in 2016 and in other regions of the state in subsequent years. I am very enthusiastic about our new-format show, and I have formed my reasons for this into a mission statement

I am very pleased that my enthusiasm was shared by all those attending the first exhibition committee meeting at Ross on Saturday 30<sup>th</sup> January. There was quite a crowd and lots of fresh ideas and volunteers for the many jobs that need doing. Thank you all, and thanks to those who could not attend but have offered to help.

Subcommittees were formed for business liaison/sponsorship and publicity. These two areas are crucial to the success of our venture. We need to work with businesses to extend ISLAND QUILTS into a quilt-themed craft fair, while maintaining accessibility and affordability for everyone. **The entry fee will be \$5.** We will ramp up publicity to get crowds through the door to admire our quilts, support the businesses and buy raffle tickets.

I hope you will help by spreading the word to all your friends, inviting friends from interstate, and sharing our enthusiasm for this new venture.

One of the ideas adopted at the meeting is a new name. While our quilt show will retain the name ISLAND QUILTS, the title for the whole event will be

## Tasmanian Quilt Expo

Another new feature will be extended hours- please see the list of dates below. To allow more time for set-up, judging will take place on the Tuesday and quilt hanging on the Wednesday and Thursday. The presentation of prizes will take place along with the 'evening with the judges' on the Thursday.

The first point of my mission statement is only possible if we have lots of great quilts to show off. So I would like to echo Chris Coulbeck-McMurray's plea from last year:

**PLEASE MAKE QUILTS!**

Kate Berry

[katequiltercygnet@gmail.com](mailto:katequiltercygnet@gmail.com)

0408 035 079




## Tasmanian Quilt Expo

### Dates

<b>Closing Date for Entry Forms</b>	Friday 5 August 2016
<b>Return Raffle Tickets by</b>	Saturday 10 September 2016 (AGM)
<b>Delivery of Quilts to Depots</b>	Wednesday 7– Friday 9 September
<b>Judging and Photography Day</b>	Tuesday 13 September 2016
<b>Hanging Days</b>	Wednesday- Thursday 14-15 September
<b>Evening with the Judges and Prize Presentation</b>	Thursday 15 September 2016 7pm at the Showgrounds
<b>Showtime!</b>	<b>Friday 16 - Sunday 18 September 2016</b>
<b>Opening Hours</b>	Friday     10am- 8pm Saturday 10am- 4pm Sunday    10am- 3pm
<b>Collection of Quilts from Depots</b>	Wednesday 20 – Friday 22 September





## **Quilters' Easter Showcase 2016**

### **Saturday 19th March 2016**

The 7th Quilters' Easter Showcase, with many of Tasmania's traders in quilt-related goods together in one venue, will be held on Saturday 19th March. This is just a day too good to miss, so mark it in your diary NOW.

- Traders with basic necessities, the hard-to-find, the latest trends ... and if it's not there on the day, you'll find someone who can get it for you. Easily!
- Show & Tell to share and showcase our work with fellow quilters: see the trends, the cutting edge designs and the current spin on old favourites!

- **The Challenge, sponsored by Patchwork Cafe UNDERWATER**

Each entry must be the work of the entrant measuring A3 Size, 11.7 x 16.5 inches or 297 x 420 mm. We are looking forward to seeing what people can do with that! Get your thinking caps on now.

- Demonstrations of specific quilting hardware and techniques.
- Lucky door prizes and a huge Raffle

**All this for just \$5 entry.**

**Where will all this happen?**

At the Brighton Civic Centre, opposite Woolworths in Green Point Road, Bridgewater.

**What do I need to take?**

A small plate of morning tea to share and your lunch. Tea and coffee will be provided.

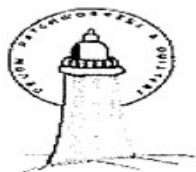
Something for Show & tell and perhaps some hand sewing?

Your Challenge entry!

Monies raised from this day are donated to approved community projects in the Brighton community.

**For further information please contact Pam by email at [pamelajs1@iprimus.com.au](mailto:pamelajs1@iprimus.com.au), phone**

**0434 335 518 or contact us via our Facebook page Quilters Easter Showcase 2016.**



**DEVON  
PATCHWORKERS  
AND QUILTERS**

**FRIENDSHIP  
DAY**

**27 February 2016**

10.00 am - 3.00 pm

**EAST DEVONPORT RECREATION  
CENTRE**

Cnr John & Caroline St  
**EAST DEVONPORT**

**Admission \$10.00**

includes M/T and A/T

**BYO LUNCH**

**RSVP by 17 February**

Karen Stagg - phone: 0409 007 059 or  
email: gnkfooty1@bigpond.com

Vonda Jeffrey - 6424 4632

northern tasmanian patchwork

**shop hop**



Sign up now  
and join me  
for all the  
fun !!

- Spend a minimum of \$20 in each participating shop
- Receive a stamp from each shop during the 'shop hop' period
- Collect all 5 stamps and receive a FREE goody bag from the last shop you visit
- Complete your passport and go into the draw for one of our major prize packs

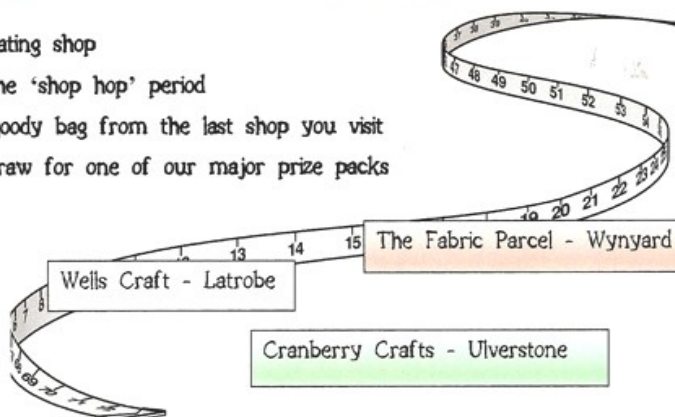
Patchworks Plus - George Town

Esme's Patchwork - Launceston

Wells Craft - Latrobe

The Fabric Parcel - Wynyard

Cranberry Crafts - Ulverstone



# BERNINA<sup>+</sup>

*made to create*



Bernina Australia are very kindly sponsoring  
us in 2016